



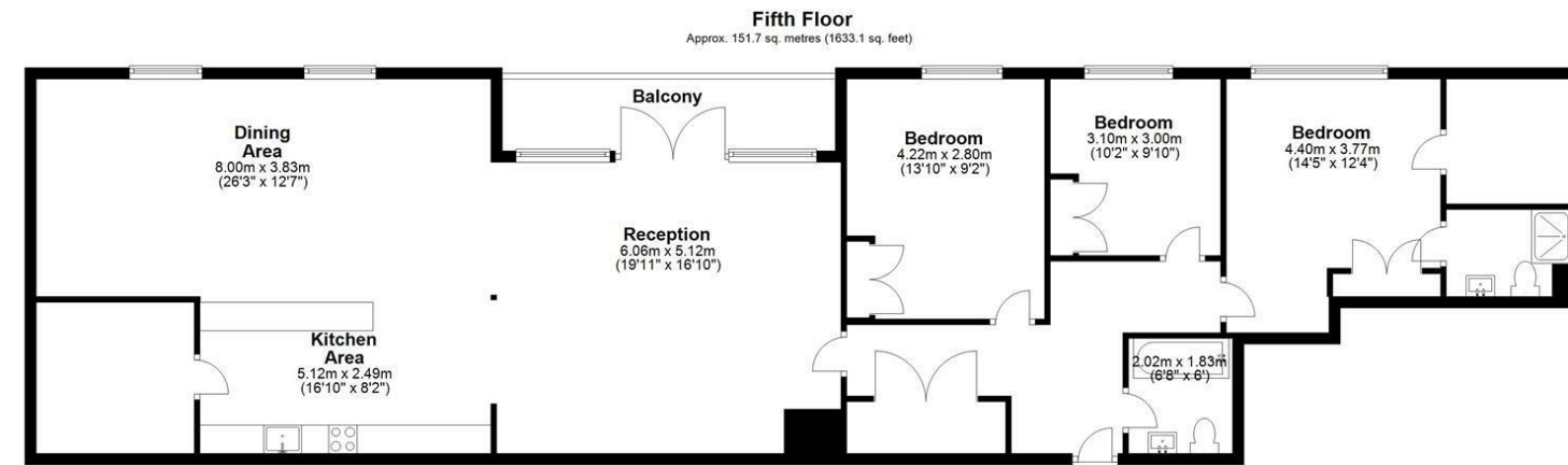
## 15 Park Lodge Avenue, West Drayton, UB7 9FR

- Parkwest
- Three double bedrooms
- Concierge
- Modern furniture
- Balcony
- Penthouse
- Residents Gym
- Two Parking spaces
- EPC rating -C
- Available NOW

**£2,500 PCM**

**Description**

Arguably one of the largest apartments in the development, Exclusive to Cameron Estate Agents is this three bedroom penthouse, situated in the ever popular Parkwest complex, close to Heathrow Airport, Stockley Business Park and West Drayton Station. The property boasts three double bedrooms, a large reception room with dining area, kitchen with granite works surfaces and integral units, two bathrooms (one en-suite), wooden flooring and excellent decor. The development has to offer residents gym, 24 hour concierge and communal gardens. Available for NOW and presented furnished.



Total area: approx. 151.7 sq. metres (1633.1 sq. feet)

**IMPORTANT NOTICE**

These particulars have been prepared upon information supplied by the Vendor and should be verified by your surveyors and solicitors. We have prepared these sales particulars as a general guide to give a broad description of the property. They are not intended to constitute part of an offer or contract. We have not carried out a structural survey and the services, appliances and specific fittings have not been tested. All photographs, measurements, floor plans and distances referred to are given as a guide only and should not be relied upon for the purchase of carpets or any other fixtures or fittings. Lease details service charge and ground rent (where applicable) are given as a guide only and should be checked and confirmed by your solicitor prior to exchange of contracts